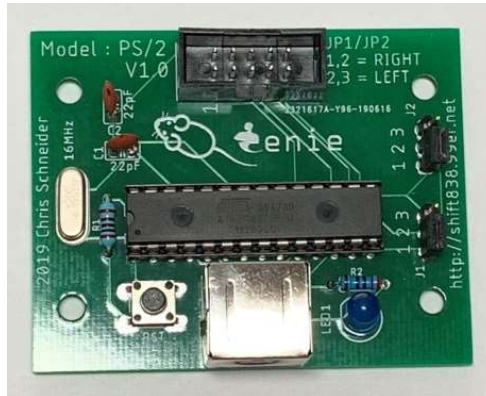


Mouse Genie

Version 1.0



Last Updated: June 4, 2020

SHIFT838 announces the new Mouse Genie!

The Mouse Genie converts standard PS/2 mouse signal to a Geneve compatible bus mouse! That's right this can replace the current Geneve Mouse that you lost or never had!

This board is powered by *SHIFT838*'s custom Arduino Code to make the magic happen. The board receives power from the Geneve and can be right or left hand configured!

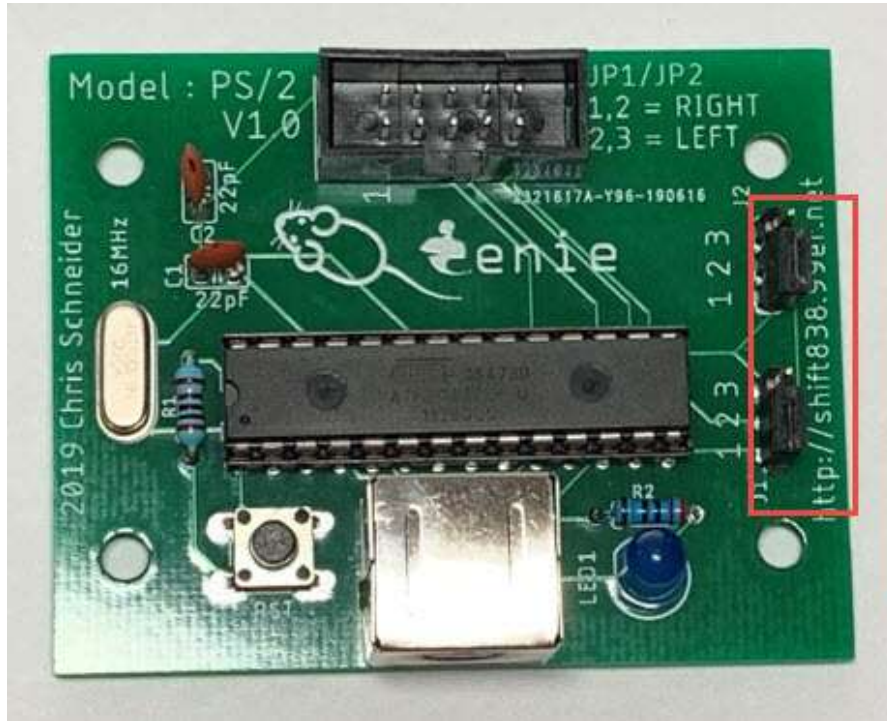
Mode switch settings: 1,2 = Right Hand
2,3 = Left Hand

Photo above is configured for right-handed users.

This board has been designed to fit inside a Hammond 1591XXL case. (not included)

Setup

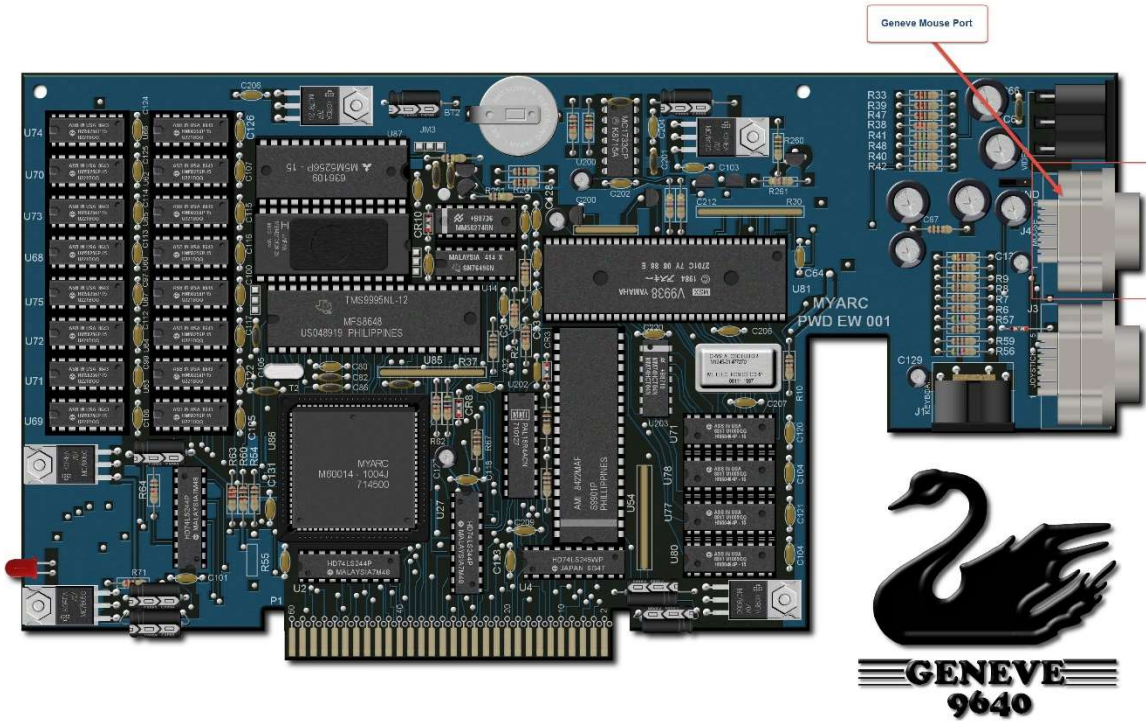
1. Set up board for right or left-handed users



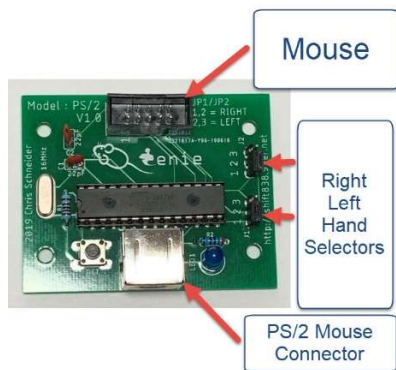
Right handed users
close jumpers 1,2
on both as shown

Left handed users
close jumpers 2,3
on both

2. Connect supplied DB9 cable to Mouse Genie (it only goes one way since it's a keyed cable)
3. Plug other end into Geneve 9640 Mouse Port



4. Plug PS/2 mouse into mouse port on Mouse Genie



5. Power the Geneve On and the LED should come on within a second or so.

ENJOY!